

PANDA P3 & PANDA smart

PANDA SCANNER ALL OVER THE WORLD

www.panda-scanner.com
info@panda-scanner.com

Chengdu | Ziyang | Suzhou | Ningbo | Hong Kong | Brazil | USA

Panda 🐾
Scanner





Features



Sleek and Compact

Only 138g
221x27x25mm



Ultra Fast and Precise

1 min ultra-fast scan
7 μ m ultra-high accuracy



Plug and Play

No power adapter needed



Ergonomic Design

White Silver

50-100 autoclaving cycles

*Smaller
but
Greater*



New Collection

The art of intraoral scanners

- Crystal White
- Radiant Silver
- Sparkly Purple
- Ice Blue
- Lightsaber Red
- Champagne Gold
- Laguna Blue



**Provide
colorful choices
for your clinic**





Silence Operating Process

Transforming your dental appointment into a calming and stress-free experience.



One Button, Infinite Control

Control should be effortless, and innovation be intuitive. This design is aimed to simplify your interaction with products. With just a single press, you saved the effort to point with a mouse.



Motion Sensing

This innovative technology allows you to control your devices without any redundant touch, which provides you a hygienic operating environment.



Anti-fogging Technology

Our innovative instant heating technology prevents the frustration of fogged lens.

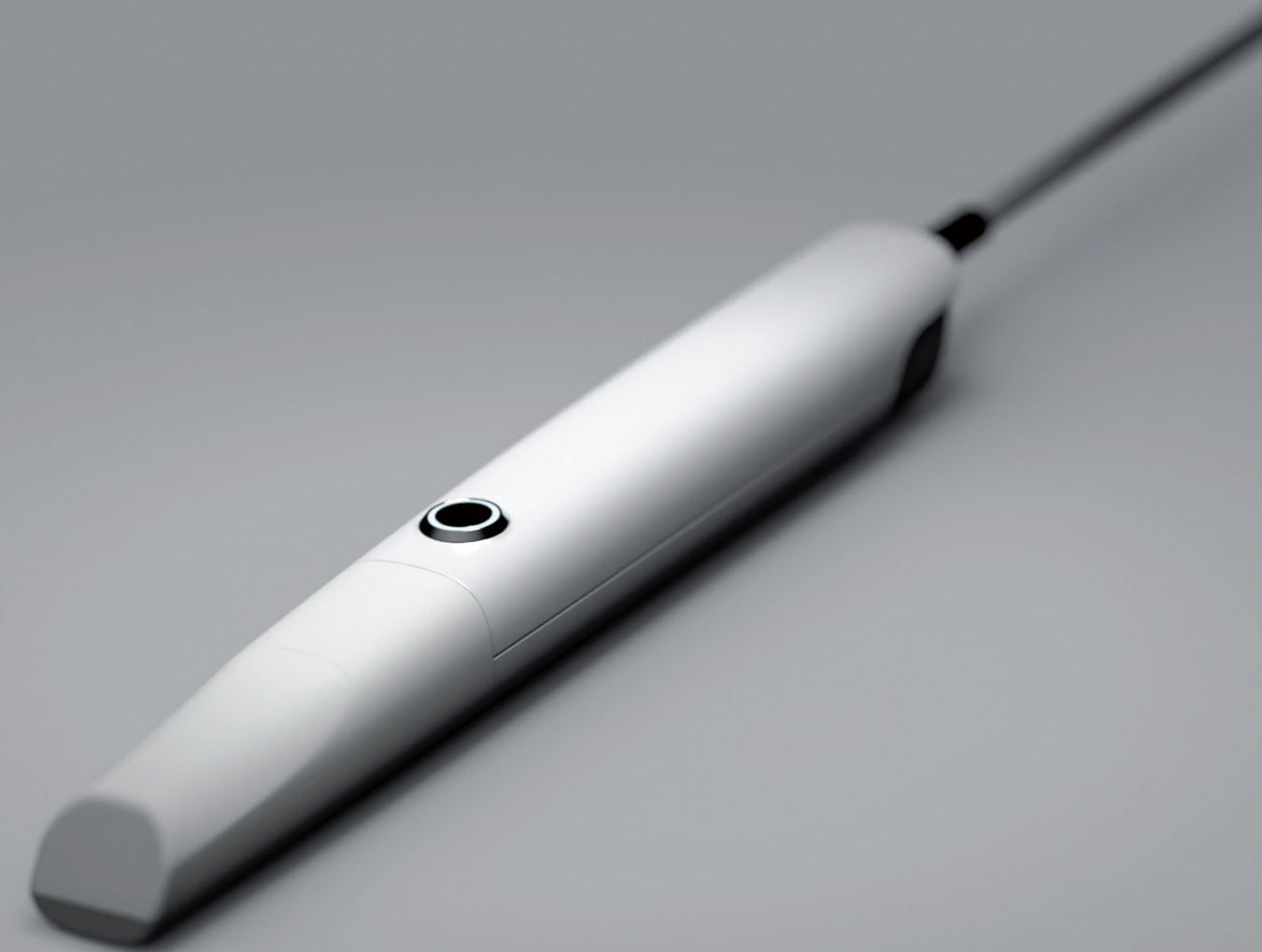
Parameters

PRODUCT INFORMATION

Category	PANDA smart
Anti Fog System	Intelligent Heating
Accuracy	≤7μm
Precision	≤5μm
Handpiece Weight	138g (192g with cable)
Handpiece Dimension	221x27x25mm
Handpiece Enclosure	High-strength Aviation Aluminum Alloy
Scan Field	18x16mm
Scan Depth	0-20mm
True Color	Full HD
Tips	x6 (Autoclavable)
Tip Autoclave Cycle	50-100 Times
Data Interface	USB3.0
Cable Length (m)	1.85m

WARRANTY

Category	PANDA smart
Standard Warranty	2 year
Extended Warranty	2 years available



SOFTWARE

Category	PANDA smart
Types of Scanning	Orthodontics, Implant, Restoration
Image Capture	Yes
3D Data Preview	Yes
Output Files	STL, PLY, PTY (encrypted for user)
Cloud Service	Yes
Cloud Service Price	5GB/free
Direct Compatibility with Dental CAD	Exocad*
Main Image Processing Tools	Trim/Edit/Recover/Lock, etc.
Margin Line Drawing	Yes
Occlusal Match	Yes
Undercut	Yes
Data Comparison	Yes
AI Technology	Auto Tissue Remove, Overlap Correct, etc.
Software License	Free
Software Upgrade	Free
Transfer Data with API	Available

*All names, logos, brands and other trademarks featured or referred to within this brochure are the property of their respective trademark holders.

PC REQUIREMENTS

Category	PANDA smart
CPU	Intel i7-12700H/Intel i7-11800H or above
RAM	16G/32G
Hard Disk	SSD 512G or above
GPU	RTX2060/RTX3060 or above
Operating System	Windows10/11 64bit
Display	Resolution 1920×1080 and above

*Check the PC Recommendation Catalog on our website for more detail.

Ergonomic
Efficient
Innovative





Features



Button Control

The tiny button carries great responsibilities, controlling the entire digital workflow. It prevents cross contamination by not touching the screen or clicking the mouse. Safety is always the top priority.



Motion Sensing

The gyroscope inside the scanner allows to see different angle of scanned images by just simply rotating the scanner. So you do not have to touch the screen to see the image.





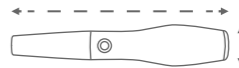
Parameters

1 min
Full Arch Scanning

5 tips
with 3 Different Angles

10 μ m
More Precise

228 g
Aviation Aluminum Alloy

Overall Size	216 x 40 x 36 mm	
Tip End	19.6 x 14.6 mm	Autoclavable
Field of View	18 x 16 mm	
Depth of Field	0-15 mm	(Adjustable up to 20mm)
Patents	40+	
Certificates	CFDA/CE/ISO13485/FDA/INMETRO/ANVISA, etc.	
Interface	USB3.0	
Data Output	STL PLY PTY	*encrypted data available

PRODUCT INFORMATION

Category	PANDA P3
Scan Field	18x16mm
Scan Depth	0-15 mm (Adjustable up to 20mm)
Accuracy	≤15μm
Precision	≤10μm
True Color	Full HD
Anti Fog System	Intelligent Heating
Full Arch Scanning Time	1 min
Handpiece Enclosure	Aviation Aluminum Alloy
Handpiece Dimension	216 x 40 x 36 mm
Handpiece Weight	228g
Tip Types	3 types (N/M/D)
Number of Tips included	x 5 (Autoclavable)
Tip Autoclave Cycle	20-50 times
Data Interface	USB3.0
Cable Length (m)	2m
Power Supply Type	AC/DC Medical Power Adapter
Supply Voltage (V)	100-240V/50-60Hz
Supply Current (A)	0.7-1.5A
Storage Temperature (°C)	-10°C-55°C

AFTERSALES

Category	PANDA P3
Standard Warranty	1 year
Extended Warranty	2-3 years available

SOFTWARE

Category	PANDA P3
Types of Scanning	Orthodontics, Implant, Restoration
Image Capture	Yes
3D Data Preview	Yes
Output Files	STL, PLY, PTY (Encrypted for user)
Cloud Service	Yes
Cloud Service Price	5GB/Free
Direct Compatibility with Dental CAD	Exocad*
Main Image Processing Tools	Trim/Edit/Recover/Lock, etc.
Margin Line Drawing	Yes
Occlusal Match	Yes
Undercut	Yes
Data Comparison	Yes
AI Technology	Auto Tissue Remove, Overlap Correct, etc.
Software License	Free
Software Upgrade	Free
Transfer Data with API	Available

*All names, logos, brands and other trademarks featured or referred to within this brochure are the property of their respective trademark holders.

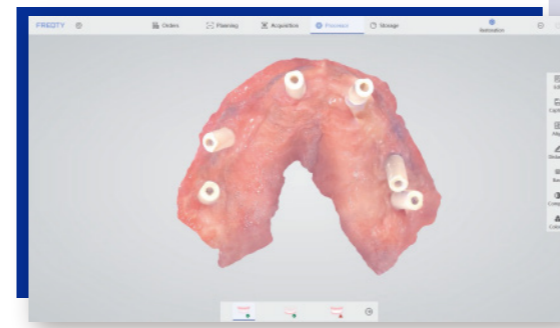
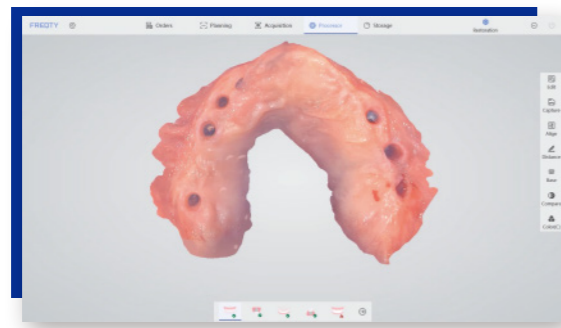
PC REQUIREMENTS

Category	PANDA P3
CPU	Intel i7-12700H/Intel i7-11800H or above
RAM	16G/32G
Hard disk	SSD 512G or above
GPU	RTX2060/RTX3060 or above
Operating system	Windows10/11 64bit
Display	Resolution 1920×1080 and above

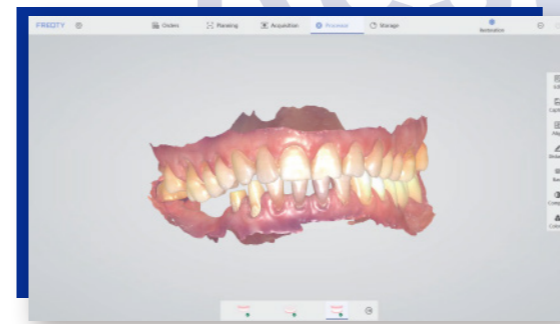
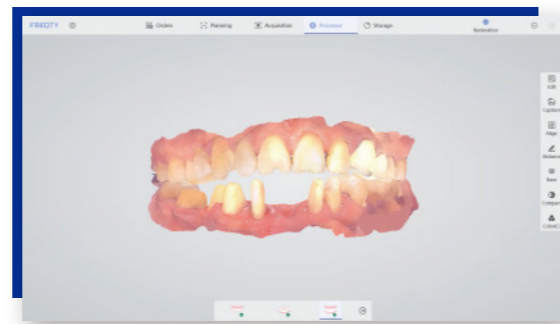
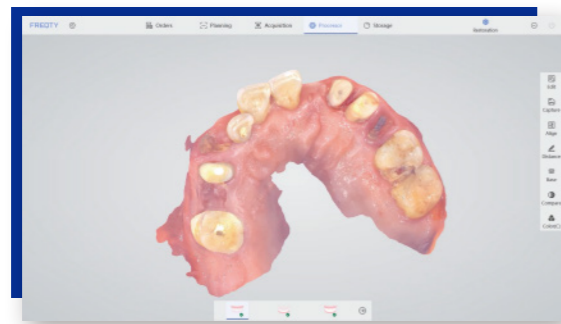
*Check the PC Recommendation Catalog on our website for more detail.

Application

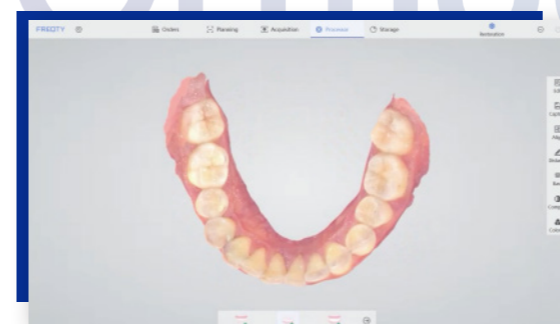
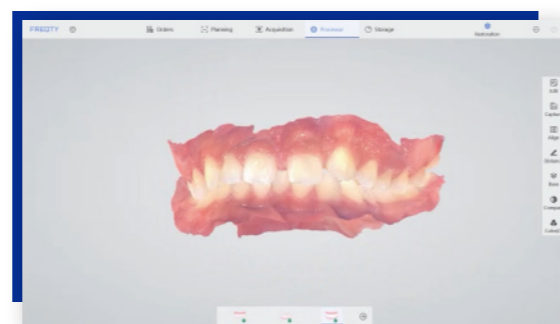
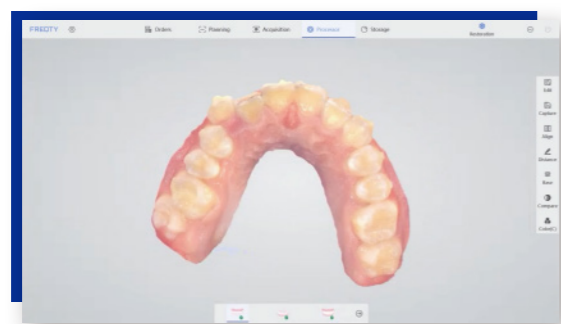
- Data Acquisition
- CAD - Implant Surgery Planning
- 3D Guide Printing
- Dental Implant
- Secondary Data Acquisition
- Make Dental Crowns
- Fitting Dental Crowns



- Data Acquisition
- CAD - Restoration Design
- CAM - Crown Milling - Wear Crowns
- Fitting Dentures



- Data Acquisition
- CAD - Orthodontic Plan
- 3D Model Printing
- Make Aligners
- Fitting Aligners

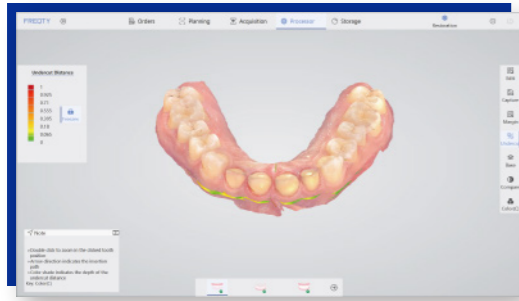


Implant

Restoration

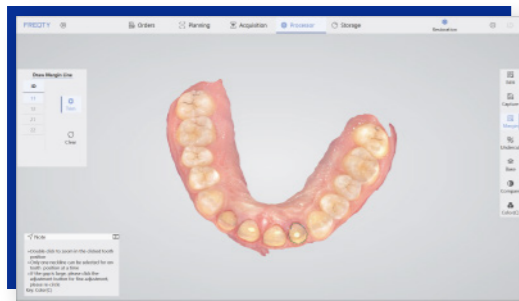
Orthodontics

Software Features



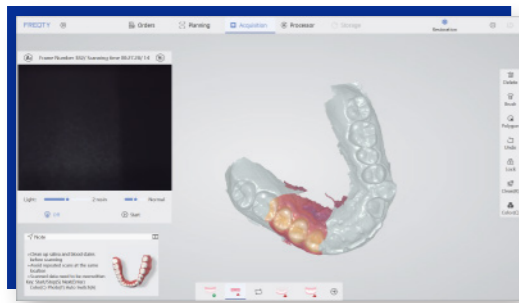
Undercut Check

Auxiliary confirmation in place, colour gradient indicates undercut, accurate prediction, and improves the communication efficiency between doctors and technicians.



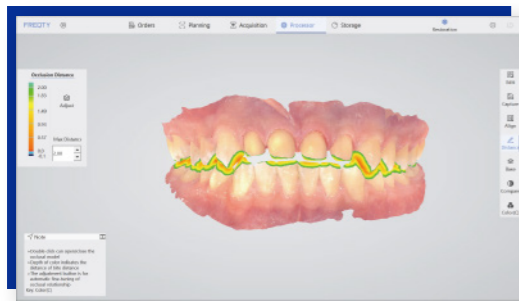
Margin Line Drawing

Draw accurate and clear margin lines, linking doctors and technicians to reduce rework.



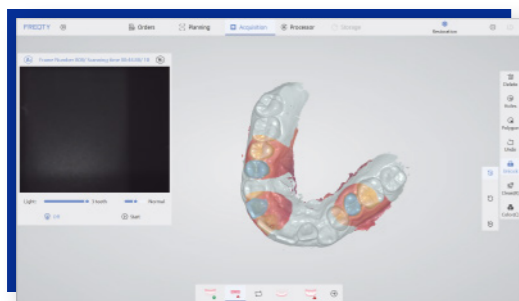
Pre-preparation Scan

Obtain pre-preparation tooth state, retain bite data, and reshape the original good teeth.



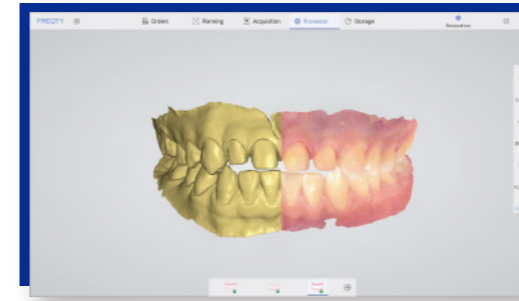
Bite Check

Color gradient indicates distance, accurately judges the restoration distance and assists in improving the effect of tooth preparation.



Lock Data

Locks the tooth position to prevent data loss and reject excess data interference.



Color Switch

True color jaws, clearly restore details, one click to switch colors, and check model data comprehensively.



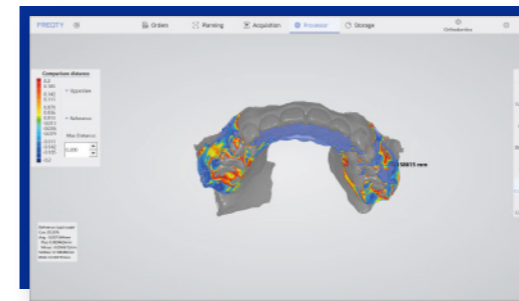
AI Intelligent Scan

Easily identify soft and hard tissues, eliminate redundant data, and make accurate dental models.



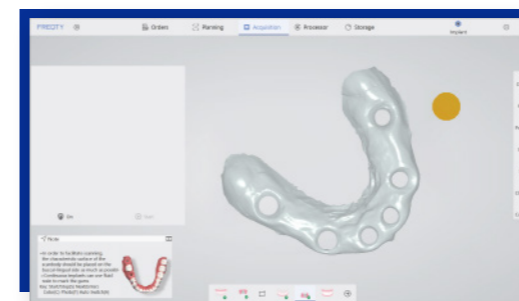
Orthodontic Simulation

Generate simulation animations to help doctors and patients communicate, share quickly, and promote orders.



Disease Course Monitoring

Full-cycle diagnosis and treatment monitoring, comparative observation of model differences, simultaneous analysis, comprehensive upgrade of diagnosis and research.



Cuff Tool (PANDA smart)

Clear cuff data, avoid tissue interference and lock automatically, significantly improving data reliability.



BAMBOO

BAMBOO Information

Category	BAMBOO
Weight	18kg
Volume	600*500*1400mm
CPU	i7-12700H
Memory	16GB
Hard Disk	512GB
Input Power	240VA
Graphics Card	RTX3060
Computer Operating System	Windows11 home

21.5-inch large touch screen



Portable hanging

Strong performance

Solid support

CUSTOMER SUPPORT

Email: support@freqty.com
Toll Free Number (USA): 888-855-2562
WhatsApp (Global): +86 18108286761



Panda 🐾
Scanner