



PANDA SCANNER ALL OVER THE WORLD

 www.panda-scanner.com
 info@panda-scanner.com

Chengdu | Ziyang | Suzhou | Ningbo | Hong Kong | Brazil | USA

PANDA P2 Plus

Create Maximum Value For Every User



Panda 🐾
Scanner

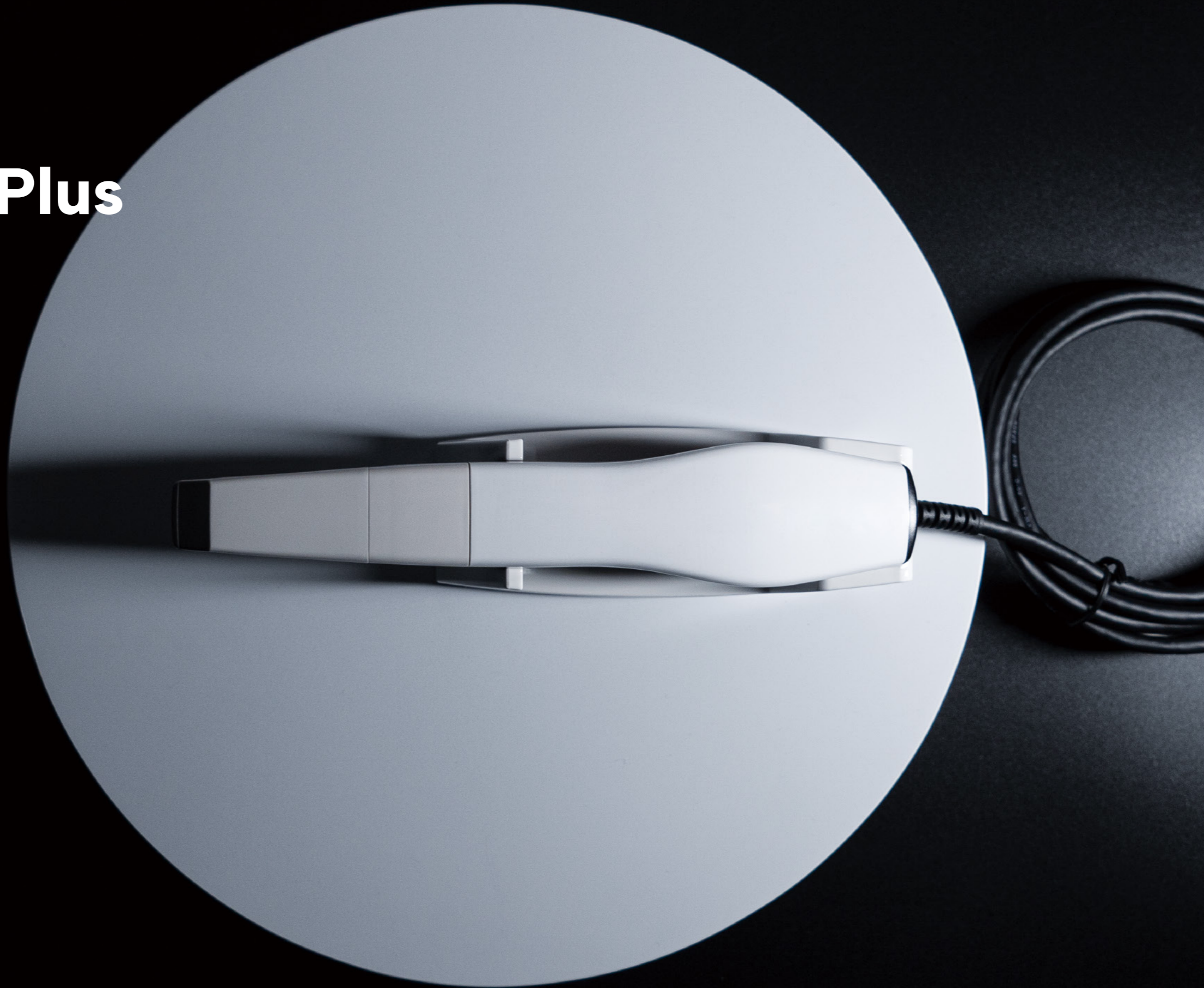
PANDA P2 Plus

Foot Pedal

With a foot pedal, dentists can control the scanning process at ease, and enjoy the fun of scanning.

Motion Sensing

The gyroscope inside the scanner allows to see different angle of scanning images by just simply rotating the scanner. So you do not have to touch the screen to see the image.





PARAMETERS

1-2 min
Full Arch Scanning

5 tips
with 3 Different Angles

10 μ m
More Precise

246 g
Aviation Aluminum Alloy

Overall Size

216 x 40 x 36 mm



Tip End

19.6 x 14.6 mm Autoclavable

Field of View

18 x 16 mm

Depth of Field

0~15 mm (Adjustable up to 20mm)

Patents

40+

Certificates

CFDA/CE/ISO13485/FDA/INMETRO/ANVISA, etc.

Interface

USB3.0







Data Output

STL PLY PTY *encrypted data available

FEATURES



Product Features

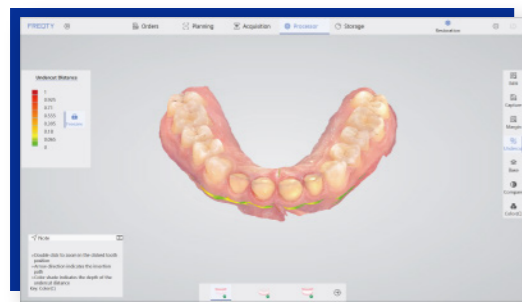
-  AI Technology, much smarter, improve a lot of scanning experience
-  3 Different tips, meet more demands of different applications
-  Much smaller, very easy to operate
-  Clear margin line, high accuracy
-  Fast scanning speed, easy to learn and use
-  True color scan and HD display



Application Features

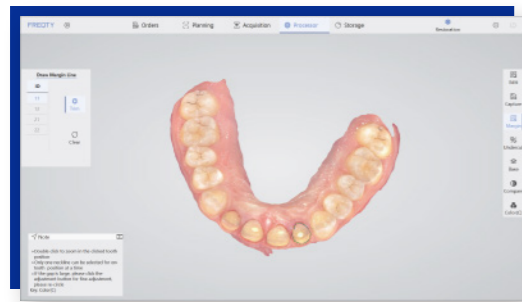
- **High resolution and true image**
 - Reproduce the real state of teeth
 - Accurate anatomical features
 - 3D high-definition color, visual communication
 - Easy and exciting treatment experience
- **Various range of software**
 - Clear and easy Margin Line drawing
 - Pre-op Scan available for Implant and restoration
 - Comparison of two sets of data such as denture and full arch
 - Enhanced scanning option for Veneer
- **Case selection and finalized report**
 - Auto Preparing the case report to the labs
 - Various options to select in reports such as Bridge or Crown
 - Convenient tools for clinics and laboratories
- **Multiple platforms to access the case**
 - 3D preview allows to be accessed via the phone
 - Share the cases to patients immediately after scanning
 - Fully prepared case reports to the labs
 - One click link directs to EXOCAD

Software Features



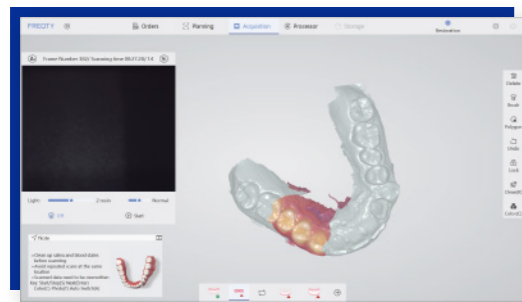
Undercut Check

Auxiliary confirmation in place, colour gradient indicates undercut, accurate prediction, and improves the communication efficiency between doctors and technicians.



Margin Line Drawing

Draw accurate and clear margin lines, linking doctors and technicians to reduce rework.



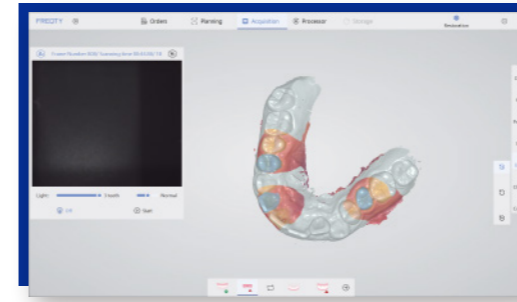
Pre-preparation Scan

Obtain pre-preparation tooth state, retain bite data, and reshape the original good teeth.



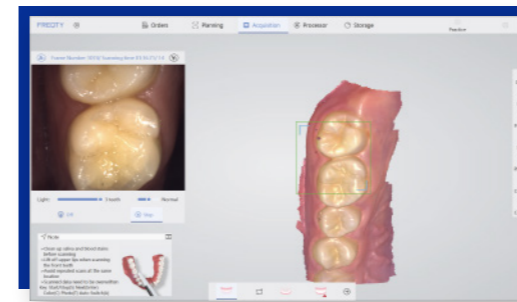
Bite Check

Color gradient indicates distance, accurately judges the restoration distance and assists in improving the effect of tooth preparation.



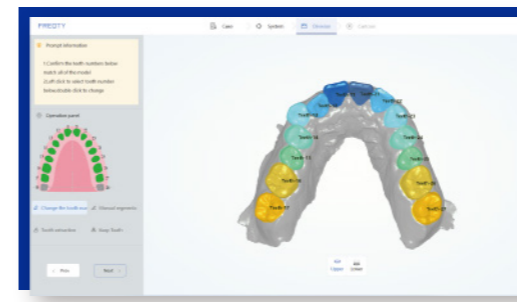
Lock Data

Locks the tooth position to prevent data loss and reject excess data interference.



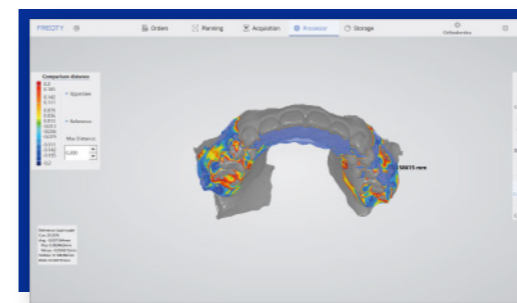
AI Intelligent Scan

Easily identify soft and hard tissues, eliminate redundant data, and make accurate dental models.



Orthodontic Simulation

Generate simulation animations to help doctors and patients communicate, share quickly, and promote orders.



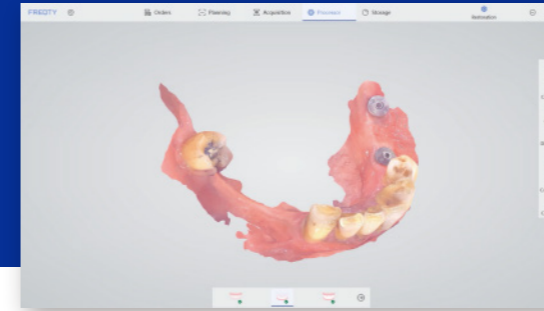
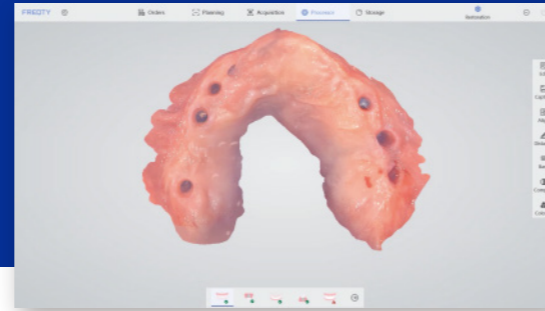
Disease Course Monitoring

Full-cycle diagnosis and treatment monitoring, comparative observation of model differences, simultaneous analysis, comprehensive upgrade of diagnosis and research.

APPLICATIONS

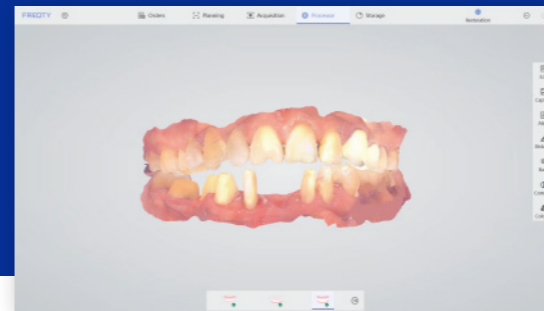
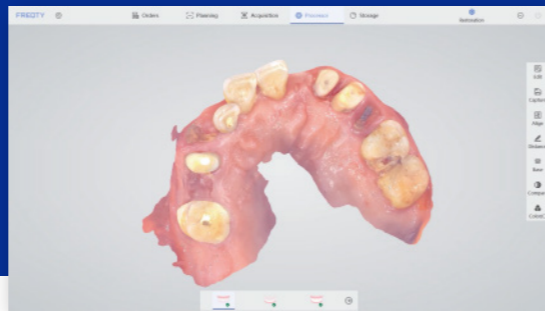
Restoration

Accurate and clear shoulder margin brings efficient design, and high-definition color images help dentists effectively distinguish between gingiva and teeth. One visit, immediate restoration.



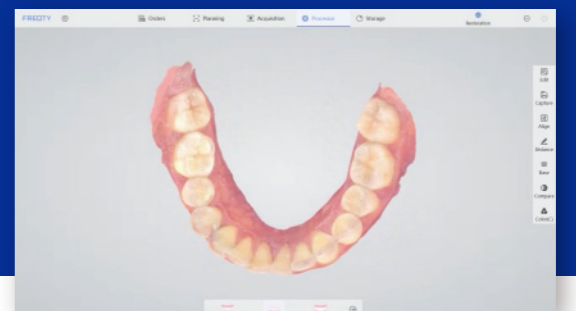
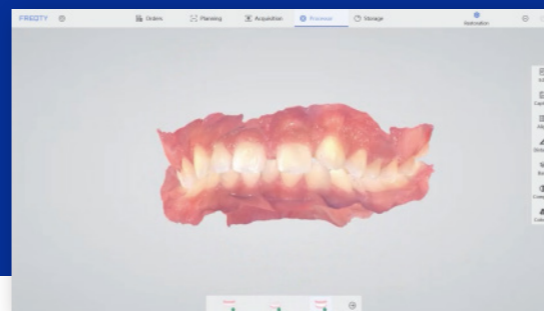
Implant

Fast scanning with a large field of view, easily capture 3mm data of cuff, and accurately scan of metal path pin. No need to do repeat impression and improve patient treatment experience.



Orthodontics

High accuracy of the full dentition, restore the real state of full arch. Get orthodontic treatment quickly, and save time for more patients.



SPECIFICATIONS

PRODUCT INFORMATION

Category	PANDA P2+
Acquisition Technology	Staring Scan
Camera Number	x 3
Scan Field	18x16mm
Scan Depth	0-15mm (Adjustable up to 20mm)
Precision	≤10μm
Accuracy	≤15μm
True Color	Full HD
Anti Fog System	Intelligent Heating
Full Jaw Scanning Time	1-2 min
Handpiece Enclosure	Aviation Aluminum Alloy
Handpiece Dimension	216 x 40 x 36 mm
Handpiece Weight	246g
Tip Types	3types (N/M/D)
Number of Tips included	5
Autoclave Cycle for Tips	20-50 times
Calibrator	Automatic
Image Transfer Interface	USB3.0
Cable Length (m)	2m
Cart Touchscreen	Optional
Power Supply Type	AC/DC Medical Power Adapter
Supply Voltage (V)	100-240V/50-60Hz
Supply Current (A)	0.7-1.5A
Storage Temperature (°C)	-10°C- 55°C
Operating Temperature (°C)	15°C-30°C

PC REQUIREMENTS

Category	PANDA P2+
CPU	Intel i7-12700H/Intel i7-11800H or above
RAM	16G/32G
Hard disk	SSD 512G or above
GPU	RTX2060/RTX3060 or above
Operating system	Windows10/11 64bit
Display	Resolution 1920×1080 and above

*Check the PC Recommendation Catalog on our website for more detail.



SOFTWARE

Category	PANDA P2+
Treatment for	Orthodontics, Implant, Restoration, etc
Image Store	Yes
3D Data Preview	Yes
Output Files	STL, PLY, PTY (encrypted for user)
Cloud Service	Yes
Cloud Service Price	5GB/free
Direct Compatibility with Dental CAD	Exocad*
Main Image Processing Tools	Trim/Edit/Recover/Lock, etc.
Margin Line Drawing	Yes
Occlusal Matching	Yes
Undercut	Yes
Comparison	Yes
AI Technology	Auto Tissue Remove, Overlapping Correct, etc.
License	Free
Software Upgrade	Free
API	Available
Scanning Feedback	Music

*All names, logos, brands and other trademarks featured or referred to within this brochure are the property of their respective trademark holders.

AFTERSALES

Category	PANDA P2+
Standard Warranty	1 year
Extended Warranty	2-3 years available

